

Appendix 2: Staffordshire Waste Partnership – Waste Performance



Performance reporting for SSB				Waste Collection Authorities								Waste Disposal Authority	Unitary Authority	SWR average	Year	Quarter	Parameter					
Performance parameter	Waste Data Flow categories	Year	Quarter	Cannock Chase DC	East Staffordshire BC	Lichfield DC	Newcastle-under-Lyme BC	Stafford BC	Staffordshire Moorlands DC	South Staffordshire DC	Tamworth BC	Staffordshire County Council	Stoke-on-Trent City Council									
Weight of residual waste collected per household (sent for incineration)	NI191: Residual household waste collected per household (kg)	2020 / 2021	Q1	141.2	141.0	129.3	138.9	123.0	99.3	131.1	135.4	142.7	164.9	135	2020 / 2021	Q1	Weight of residual waste collected per household					
			Q2	133.6	128.3	126.2	126.4	118.9	109.6	124.3	132.5	159.0	150.4	131		Q2						
			Q3	130.8	118.4	128.0	113.9	113.3	101.3	124.9	128.0	145.9	139.1	124		Q3						
			Q4	139.8	143.4	127.7	121.5	125.7	106.1	135.3	129.3	158.5	165.5	135		Q4						
		2021 / 2022	Q1	130.2	133.7	124.4	117.7	119.2	96.1	130.2	136.4	159.3	155.9	130	2021 / 2022	Q1						
			Q2	132.7	131.1	127.9	102.7	116.4	109.2	120.5	123.8	139.6	146.3	125		Q2						
			Q3	121.7	140.5	124.8	107.6	115.9	103.3	131.5	124.8	145.6	133.7	125		Q3						
			Q4	136.1	132.2	124.2	101.6	121.4	103.2	119.8	125.6	149.4	155.3	127		Q4						
		2022 / 2023	Q1	118.1	134.6	110.6	102.3	114.4	99.7	121.0	127.5	145.2	141.4	121	2022 / 2023	Q1						
			Q2	127.6	120.7	112.4	99.1	111.9	91.3	114.2	119.9	136.4	138.8	117		Q2						
			Q3	113.2	129.4	114.2	97.7	111.8	95.0	123.8	125.0	133.5	126.8	117		Q3						
			Q4	135.0	128.8	116.9	100.5	115.5	100.3	115.4	123.2	140.3	152.0	123		Q4						
		Total recycling rate (all waste streams)	NI192: % of household waste sent for reuse, recycling or composting	2020 / 2021	Q1	CCDC	ESBC	LDC	NuLBC	SBC	SMDC	SSDC	TBC	SCC	SoTCC	48%		2020 / 2021	Q1	Total recycling rate (all waste streams)		
					Q2	47.8%	47.2%	52.0%	39.3%	52.0%	63.0%	55.1%	41.1%	49.5%	30.8%	48%			Q2			
					Q3	46.7%	49.5%	50.5%	44.6%	55.1%	57.8%	51.4%	43.2%	48.4%	39.4%	49%			Q3			
					Q4	38.9%	42.7%	45.2%	44.1%	48.1%	54.2%	44.7%	38.0%	43.9%	30.4%	43%			Q4			
2021 / 2022	Q1			46.7%	47.4%	49.9%	47.7%	50.7%	59.9%	48.7%	42.1%	46.8%	39.8%	48%	2021 / 2022	Q1						
	Q2			45.3%	46.2%	49.1%	52.5%	50.4%	57.2%	51.3%	43.6%	45.3%	39.1%	48%		Q2						
	Q3			40.1%	37.2%	43.1%	46.0%	43.7%	50.5%	40.8%	43.7%	37.6%	42.4%	41%		Q3						
	Q4			34.2%	34.6%	38.9%	42.3%	39.4%	48.8%	42.0%	36.6%	39.2%	26.3%	38%		Q4						
2022 / 2023	Q1			47.6%	42.8%	50.1%	48.4%	50.2%	55.6%	48.4%	39.5%	47.8%	41.0%	47%	2022 / 2023	Q1						
	Q2			40.8%	41.9%	45.7%	47.2%	45.7%	57.4%	46.4%	47.2%	46.2%	36.8%	45%		Q2						
	Q3			39.1%	35.7%	42.0%	44.3%	42.7%	52.4%	40.1%	33.6%	42.8%	30.5%	40%		Q3						
	Q4			31.6%	32.9%	36.4%	40.2%	38.3%	46.6%	39.5%	31.5%	37.5%	24.6%	36%		Q4						
Percentage of waste sent to landfill	NI193: % of municipal waste landfilled			2020 / 2021	Q1									0.8%	6.9%	4%	2020 / 2021	Q1	Percentage of waste sent to landfill			
					Q2										2.7%	3.2%		3%			Q2	
					Q3											0.9%		3.6%			2%	Q3
					Q4											1.0%		3.5%			2%	Q4
		2021 / 2022	Q1											3.6%	8.7%	6%	2021 / 2022	Q1				
			Q2											1.5%	3.4%	2%		Q2				
			Q3											1.0%	1.2%	1%		Q3				
			Q4											2.0%	1.4%	2%		Q4				
		2022 / 2023	Q1											1.1%	1.1%	1%	2022 / 2023	Q1				
			Q2											0.1%	2.0%	1%		Q2				
			Q3											0.3%	1.1%	1%		Q3				
			Q4											0.4%	0.8%	1%		Q4				
		Percentage of waste recycled (dry recyclable materials)	% household waste sent for recycling	2020 / 2021	Q1	CCDC	ESBC	LDC	NuLBC	SBC	SMDC	SSDC	TBC	SCC	SoTCC	20%	2020 / 2021	Q1		Percentage of waste recycled (dry recyclable materials)		
					Q2	19.8%	18.9%	24.7%	17.2%	20.6%	21.0%	20.2%	26.0%	20.7%	13.3%	20%		Q2				
					Q3	19.1%	19.2%	23.2%	18.6%	20.8%	19.6%	20.9%	25.1%	20.9%	20.0%	21%		Q3				
					Q4	22.2%	22.3%	26.4%	22.3%	23.5%	21.8%	24.5%	22.3%	28.5%	23.8%	21.2%		24%			Q4	
2021 / 2022	Q1			24.3%	22.9%	29.1%	25.9%	28.3%	24.4%	31.2%	26.4%	23.7%	26%	2021 / 2022	Q1							
	Q2			21.2%	19.8%	23.8%	20.4%	22.9%	21.2%	16.0%	24.5%	21.9%	20.5%		21%	Q2						
	Q3			19.8%	19.7%	22.1%	20.4%	22.1%	18.1%	17.0%	25.5%	21.0%	18.5%		21.4%	20%	Q3					
	Q4			23.3%	20.9%	26.3%	22.0%	22.3%	19.1%	28.7%	27.6%	23.5%	21.0%		23%	Q4						
2022 / 2023	Q1			23.2%	23.4%	27.3%	23.0%	25.0%	24.5%	24.3%	30.1%	25.2%	21.0%	25%	2022 / 2023	Q1						
	Q2			19.5%	13.5%	21.7%	19.2%	20.9%	17.8%	18.3%	19.2%	22.5%	21.4%	21.0%		20%	Q2					
	Q3			18.5%	18.3%	22.5%	20.8%	21.6%	20.8%	19.9%	23.7%	23.5%	21.2%	21%		Q3						
	Q4			21.4%	17.9%	23.3%	23.6%	23.0%	22.8%	21.0%	23.8%	24.4%	23.1%	22%		Q4						
Percentage of waste composted (garden waste, or garden and food combined)	% household waste sent for composting			2020 / 2021	Q1	CCDC	ESBC	LDC	NuLBC	SBC	SMDC	SSDC	TBC	SCC	SoTCC	28%	2020 / 2021	Q1	Percentage of waste composted (garden waste, or garden and food combined)			
					Q2	28.0%	28.3%	27.4%	22.0%	31.4%	42.0%	34.8%	19.1%	28.1%	17.4%	28%		Q2				
					Q3	27.3%	30.2%	27.3%	24.6%	34.3%	38.1%	30.5%	18.1%	27.4%	19.3%	28%		Q3				
					Q4	16.3%	20.4%	18.8%	18.3%	18.3%	18.5%	13.3%	18.5%	24.9%	32.3%	9.1%		18%			Q4	
		2021 / 2022	Q1	11.0%	12.7%	11.6%	10.9%	13.1%	24.1%	15.8%	6.3%	13.1%	1.7%	12%	2021 / 2022	Q1						
			Q2	25.2%	27.5%	26.1%	22.6%	27.7%	38.7%	22.0%	17.2%	24.7%	19.2%	25%		Q2						
			Q3	25.1%	26.4%	27.1%	25.1%	29.4%	39.1%	24.0%	18.1%	25.6%	17.7%	26%		Q3						
			Q4	16.4%	16.1%	16.8%	17.1%	21.4%	31.3%	22.4%	10.0%	18.7%	9.4%	18%		Q4						
		2022 / 2023	Q1	11.0%	11.2%	11.5%	12.7%	14.4%	24.2%	17.6%	6.5%	13.9%	2.2%	13%	2022 / 2023	Q1						
			Q2	28.1%	29.2%	28.4%	23.5%	29.3%	37.8%	30.1%	17.0%	26.3%	19.9%	27%		Q2						
			Q3	22.4%	23.5%	23.2%	20.4%	24.1%	36.5%	26.5%	14.0%	22.6%	15.6%	23%		Q3						
			Q4	17.7%	17.7%	18.7%	14.1%	19.7%	29.5%	19.1%	9.8%	18.2%	7.3%	17%		Q4						
		Percentage of waste sent for AD (food waste)	% household waste sent for anaerobic digestion (formerly part of BVPI 82b)	2020 / 2021	Q1				0.1%						0%	2020 / 2021	Q1	Percentage of waste sent for AD				
					Q2					1.4%							1%			Q2		
					Q3					3.3%										3%	Q3	
					Q4					4.0%										4%	Q4	
2021 / 2022	Q1							4.9%							5%	2021 / 2022	Q1					
	Q2							6.9%							7%		Q2					
	Q3							6.9%							7%		Q3					
	Q4							6.6%							0		Q4					
2022 / 2023	Q1							5.7%							0	2022 / 2023	Q1					
	Q2							5.9%							0		Q2					
	Q3							6.9%							0		Q3					
	Q4							7.3%							0		Q4					

Page 17

Protective Marking Level 2 SCC Use Only



Appendix 2: Staffordshire Waste Partnership – Waste Performance

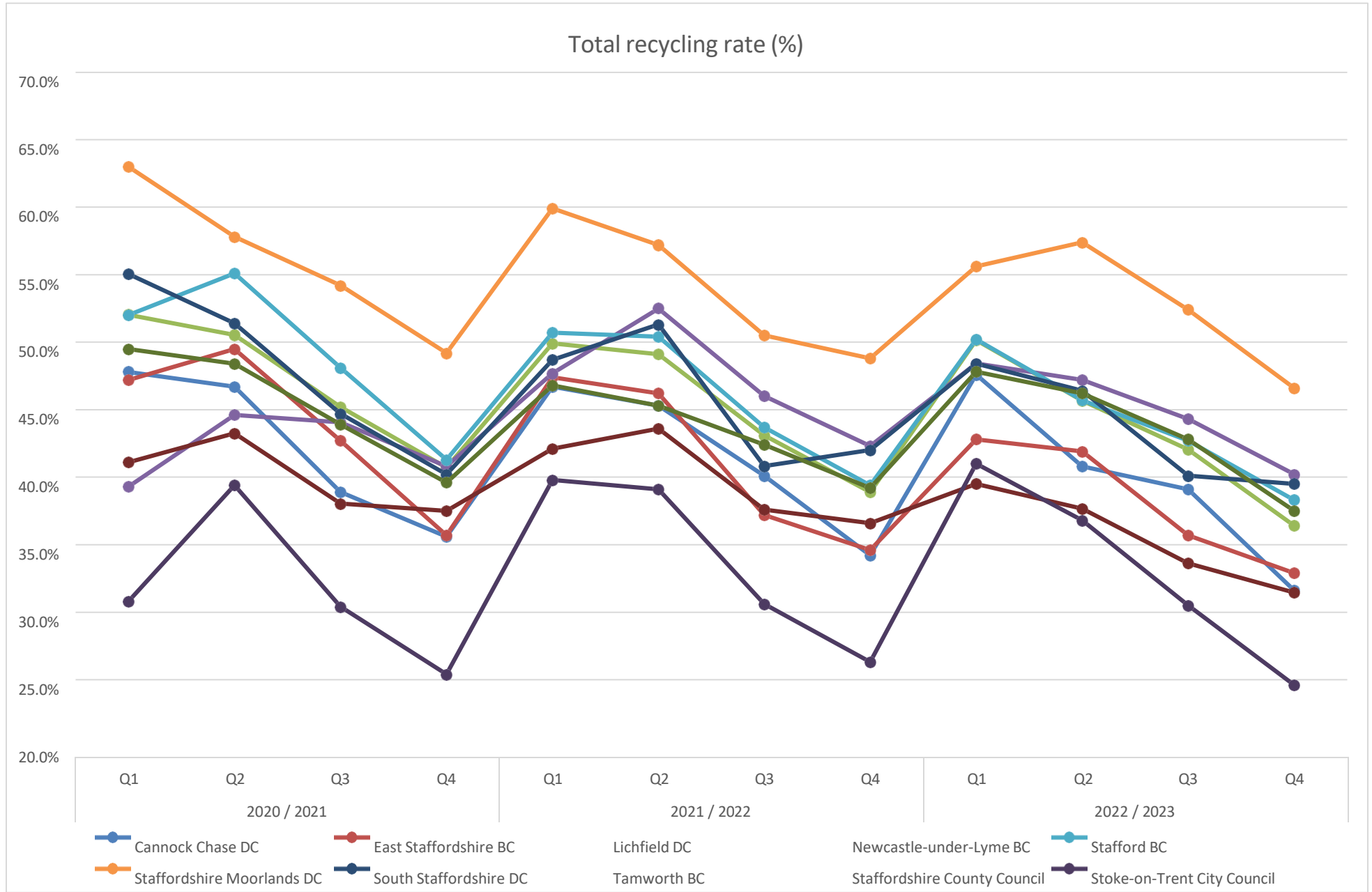
Performance parameter	Waste Data Flow categories	Year	Quarter	Cannock Chase DC	East Staffordshire BC	Lichfield DC	Newcastle-under-Lyme BC	Stafford BC	Staffordshire Moorlands DC	South Staffordshire DC	Tamworth BC	Staffordshire County Council	Stoke-on-Trent City Council	SWP average	Year	Quarter	Parameter
Performance reporting for SSB				Waste Collection Authorities									Waste Disposal Authority	Unitary Authority			

Appendix 2: Staffordshire Waste Partnership – Waste Performance

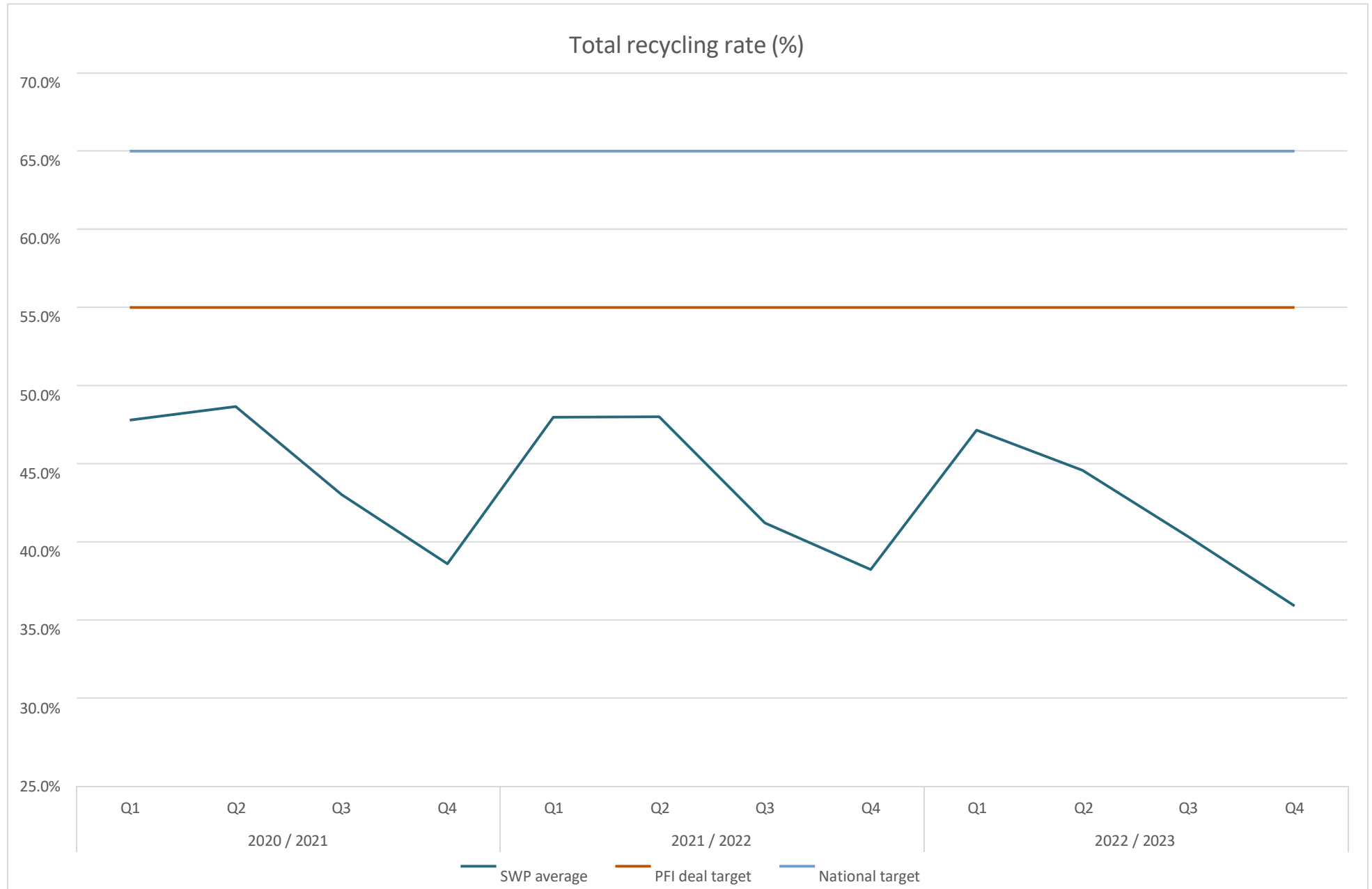
Performance reporting for SSB			Waste Collection Authorities								Waste Disposal Authority	Unitary Authority	SWP average	Staffordshire Waste Partnership	
Performance parameter	Waste Data Flow categories	Year	Cannock Chase DC	East Staffordshire BC	Lichfield DC	Newcastle-under-Lyme BC	Stafford BC	Staffordshire Moorlands DC	South Staffordshire DC	Tamworth BC	Staffordshire County Council	Stoke-on-Trent City Council	Year	Parameter	
Weight of residual waste collected per household (sent for incineration)	NI191: Residual household waste collected per household (kg)	2020 / 2021	136.4	132.8	127.8	125.2	120.2	104.1	128.9	131.3	151.5	155.0	131	Weight of residual waste collected per household	
		2021 / 2022	133.6	130.9	126.6	119.9	119.3	103.3	128.7	131.5	155.7	152.7	130		
		2022 / 2023	133.4	131.6	127.0	113.9	118.6	103.2	127.7	129.4	150.8	151.7	129		
			CCDC	ESBC	LDC	NuLBC	SBC	SMDC	SSDC	TBC	SCC	SoTCC			
Total recycling rate (all waste streams)	NI192: % of household waste sent for reuse, recycling or composting	2020 / 2021	42.3%	43.8%	47.1%	42.2%	49.1%	56.1%	47.8%	40.0%	45.4%	31.5%	45%	Total recycling rate (all waste streams)	
		2021 / 2022	42.0%	43.8%	46.6%	44.3%	48.8%	55.3%	46.2%	40.2%	44.7%	33.8%	45%		
		2022 / 2023	41.6%	43.0%	46.2%	46.3%	47.6%	55.1%	46.2%	40.3%	43.9%	33.7%	44%		
			CCDC	ESBC	LDC	NuLBC	SBC	SMDC	SSDC	TBC	SCC	SoTCC			
Percentage of waste sent to landfill	NI193: % of municipal waste landfilled	2020 / 2021									1.3%	4.3%	3%	Percentage of waste sent to landfill	
		2021 / 2022									2.0%	4.7%	3%		
		2022 / 2023										1.7%	4.8%		3%
			CCDC	ESBC	LDC	NuLBC	SBC	SMDC	SSDC	TBC	SCC	SoTCC			
Percentage of waste recycled (dry recyclable materials)	% household waste sent for recycling	2020 / 2021	21.3%	20.8%	25.8%	21.0%	23.3%	20.8%	22.5%	27.7%	22.9%	19.5%	23%	Percentage of waste recycled (dry recyclable materials)	
		2021 / 2022	21.7%	21.1%	25.6%	21.8%	23.9%	20.9%	21.4%	27.3%	23.2%	21.4%	23%		
		2022 / 2023	21.9%	21.2%	25.4%	22.2%	23.9%	20.4%	27.4%	22.9%	21.7%	21.7%	23%		
			CCDC	ESBC	LDC	NuLBC	SBC	SMDC	SSDC	TBC	SCC	SoTCC			
Percentage of waste composted (garden waste, or garden and food combined)	% household waste sent for composting	2020 / 2021	20.7%	22.9%	21.3%	19.0%	25.9%	34.1%	23.6%	13.3%	22.1%	11.9%	21%	Percentage of waste composted (garden waste, or garden and food combined)	
		2021 / 2022	20.0%	22.7%	21.0%	19.1%	25.0%	33.3%	20.4%	12.8%	21.3%	12.3%	21%		
		2022 / 2023	19.4%	21.7%	20.9%	19.3%	23.8%	33.5%	18.8%	12.8%	20.8%	11.9%	20%		
			CCDC	ESBC	LDC	NuLBC	SBC	SMDC	SSDC	TBC	SCC	SoTCC			
Percentage of waste sent for AD (food waste)	% household waste sent for anaerobic digestion (formerly part of BVPI 82b)	2020 / 2021				2.2%							2%	Percentage of waste sent for AD (food waste)	
		2021 / 2022				3.4%							3%		
		2022 / 2023				4.8%							5%		
			CCDC	ESBC	LDC	NuLBC	SBC	SMDC	SSDC	TBC	SCC	SoTCC			
Performance parameter	Waste Data Flow categories	Year	Cannock Chase DC	East Staffordshire BC	Lichfield DC	Newcastle-under-Lyme BC	Stafford BC	Staffordshire Moorlands DC	South Staffordshire DC	Tamworth BC	Staffordshire County Council	Stoke-on-Trent City Council	SWP average	Year	Parameter
Performance reporting for SSB			Waste Collection Authorities								Waste Disposal Authority	Unitary Authority	Staffordshire Waste Partnership		

Appendix 2: Staffordshire Waste Partnership – Waste Performance

Page 20
Page 73

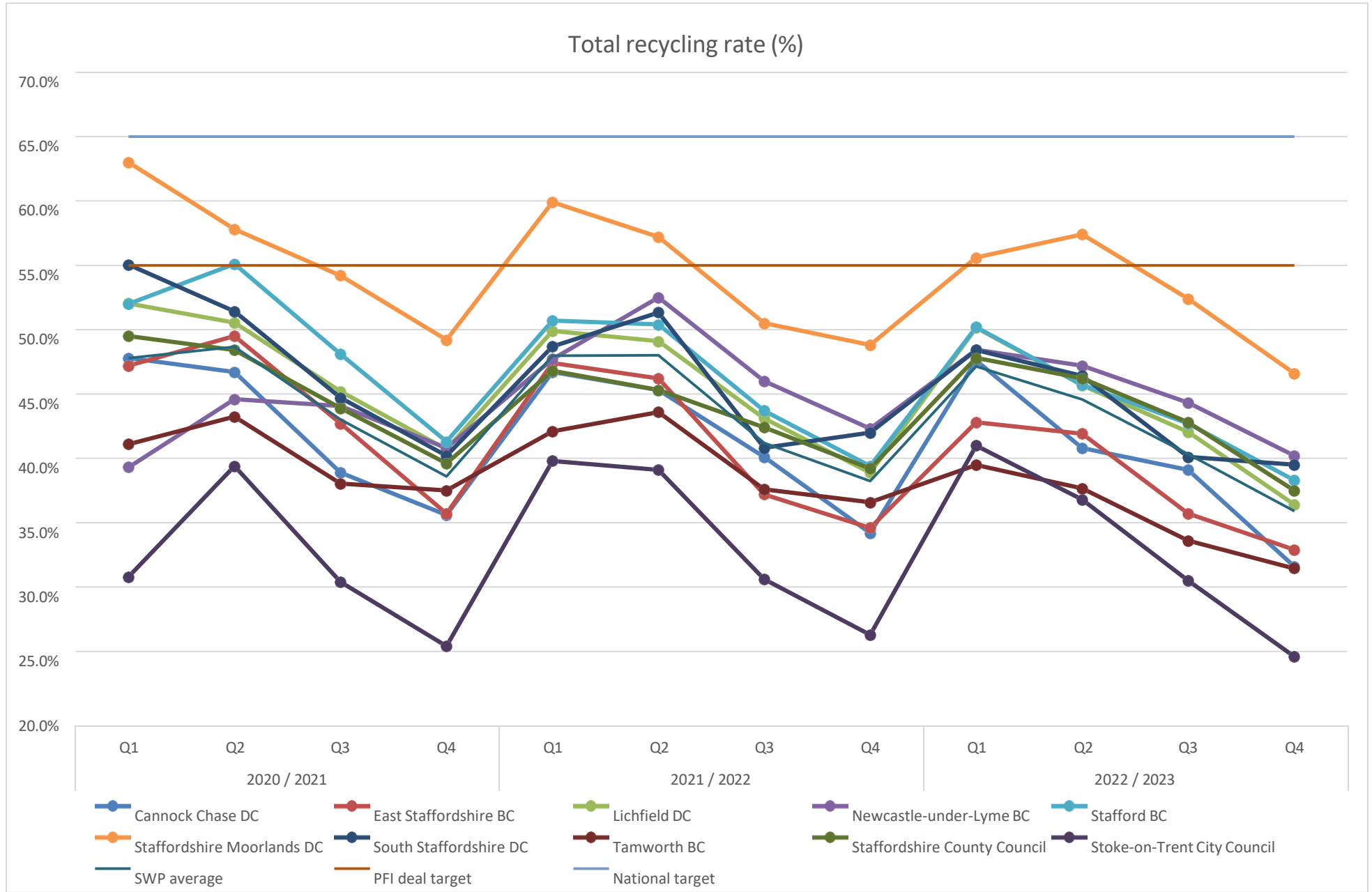


Appendix 2: Staffordshire Waste Partnership – Waste Performance



Appendix 2: Staffordshire Waste Partnership – Waste Performance

Page 22
Page 75



Appendix 2: Staffordshire Waste Partnership – Waste Performance

Weight of residual waste collected per household (kg)

